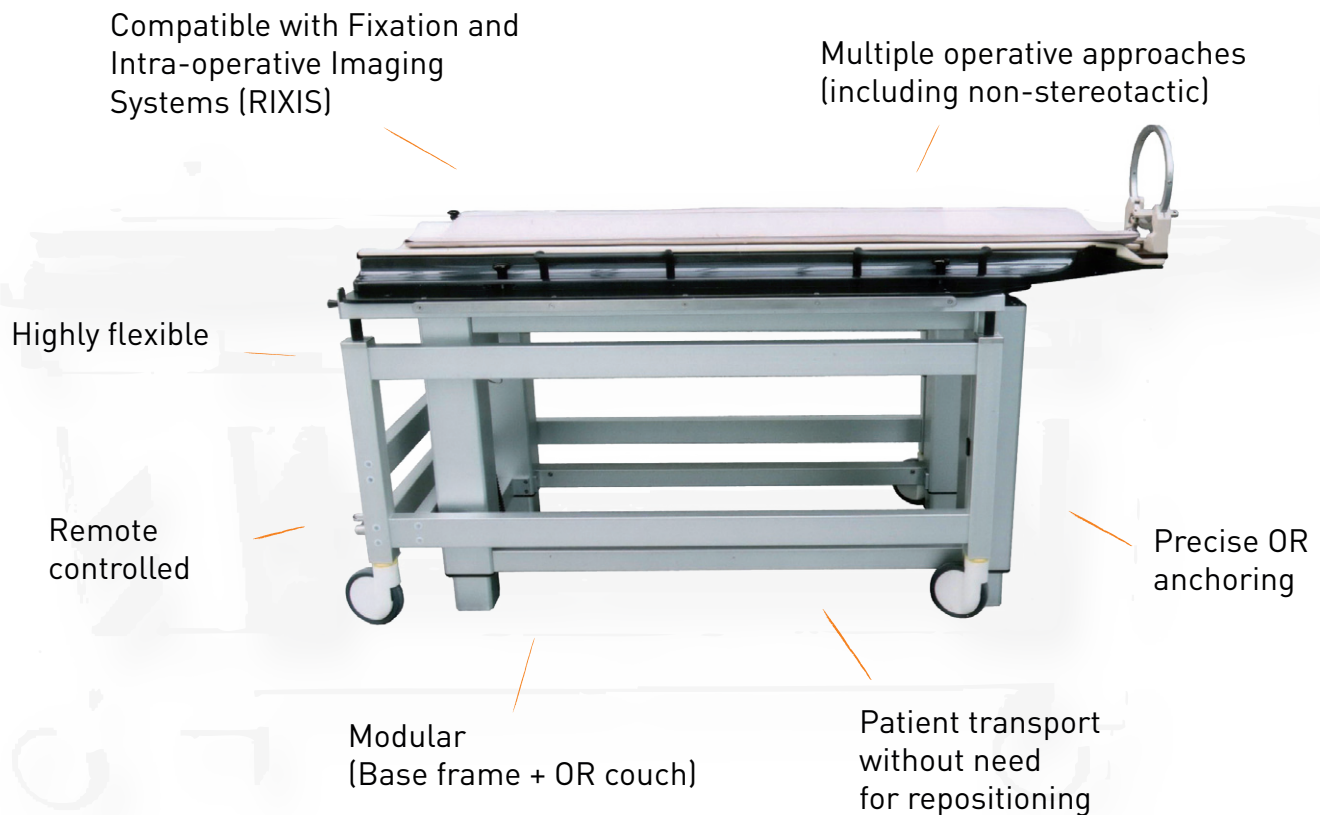


Couch & Transport System

Product information



Advantages

- Move the patient to Imaging Rooms, Linac and OR **without repositioning**.
- Use the system also for **non-stereotactic treatments**.
- Adapt the system to your OR table, MR and CT system with **individual solutions**.
- Assemble the **modular based** system adjusted to your needs:
 - height-adjustable base frame
 - transport couch
 - various couch adapters
 - customised manufacturing process
- Move safely and comfortably due to **suspension**.
- **Minimise** brainshift.
- Transfer patient easily to couch lateral or frontal due to **specially coated** base plate.
- CT/MR compatible (Carbon/**GRP**).

Couch & Transport System

Product information

System Set

SP-04000 Couch & Transport System

Dimensions

Transport system: 1590 mm x 830 mm x 820mm (l/w/h)

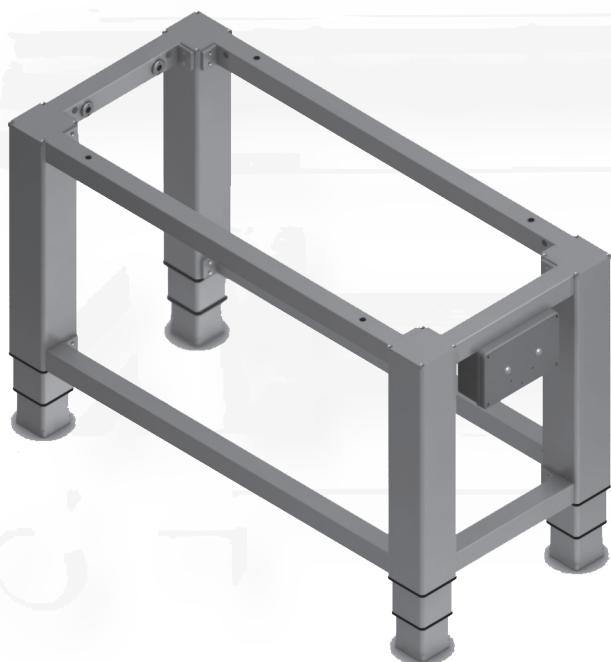
Patient plate: 2000 mm x 910 mm (l/w)
including Accessory rail

Set includes

SP-0101 Base frame OR
SP-0102 Transport couch
SP-010 21 Couch, CT compatible
SP-01022 Couch, CT/MR compatible*
SP-01022-M Couch, CT/MR compatible (GRP)*

Accessories

SP-0103 Mount, X-Ray cassette
SP-0103-D Mount, Flat-Panel
SP-0104 Accessories bin
SP-0105 Adapter plate, CT
SP-0106 Adapter plate, MR



Summary

The Stereotactic Couch & Transport system is designed for maximum flexibility while maintaining highest precision due to constant fixation of the patient.

There is no need for time consuming repositioning anymore. The compatibility with fixation and imaging devices allows for further precision.

**our customised
solutions ensure safe,
fast and precise
stereotactic treatment**

* optional